



The Readings | Harlow | CM18 7BU

Asking Price £186,000

 clarknewman

The Readings | Harlow | CM18 7BU

Asking Price £186,000

A WELL PRESENTED ONE BEDROOM GROUND FLOOR FLAT with direct access into communal garden. The property comprises of a modern fitted kitchen, spacious living room with patio doors into garden, a large double bedroom with an array of fitted wardrobes and a newly refurbished bathroom suite. Other benefits include UPVC double glazed windows and gas heating via radiators. Viewings advised.

- One Double Bedroom
- Well Presented
- Council Tax Band: B
- Ground Floor Flat
- Tidy Communal Garden
- EPC Rating: C

#### Front

Communal areas including bins to front, concrete path to communal lobby. External timber door to entrance hall.

#### Entrance Hall

7'00" x 4'09" (2.13m x 1.45m)

External door to communal lobby. Heating thermostat to wall. Internal doors to kitchen, living room, bedroom and bathroom. Built-in storage cupboard housing electrics.

#### Living Room

13'00" x 12'10" (3.96m x 3.91m)

UPVC double glazed patio door into communal garden, radiator to wall. Internal door to entrance hall.



 clarknewman





### Kitchen

10'00" x 7'04" (3.05m x 2.24m)

UPVC double glazed window to front. Modern fitted kitchen with a range of wall and base units, laminate worktops and stainless steel sink and drainer. Integrated fridge freezer, electric oven and hob with cooker hood above. Plumbing for washing machine. Built-in storage cupboard housing gas boiler. Internal door to entrance hall.

### Bedroom

12'00" x 12'00" (3.66m x 3.66m)

UPVC double glazed window facing garden, radiator to wall. A range of fitted wardrobes and drawers. Internal door to entrance hall.

### Bathroom

7'00" x 5'10" (2.13m x 1.78m)

UPVC double glazed window. Fully tiled bathroom suite consisting of L-shaped bath, glass screen and shower above. White WC and vanity sink. Chrome heated towel rail to wall. Internal door to entrance hall.

### Communal Garden

To the rear there is a large communal garden with shared use.

### Lease Information

The below figures have been provided to us by the vendors:

Service Charges: £600 per annum

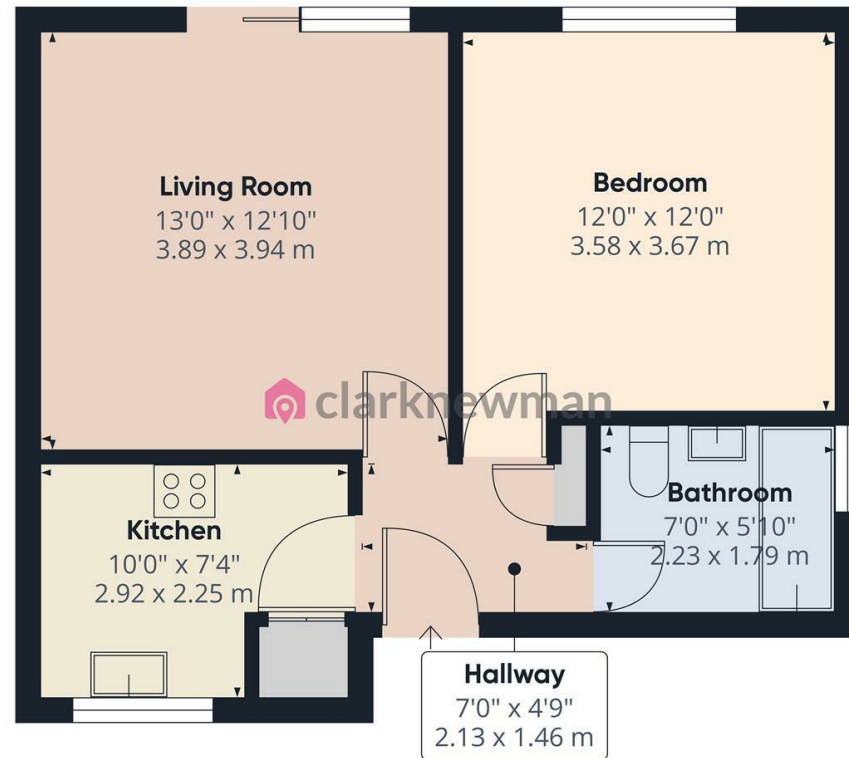
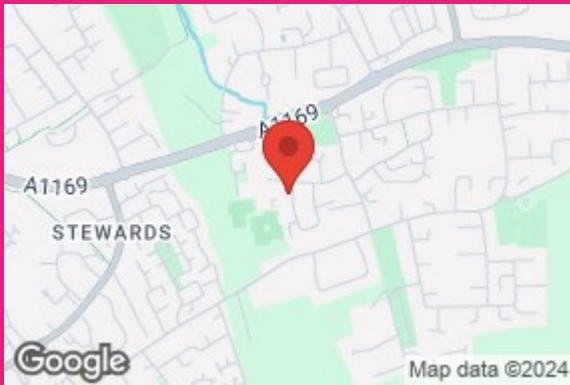
Ground Rent: £10 per annum

Lease: 88 years remaining

### Local Area

The Readings is in the South of Harlow, close by to Bush Fair Shopping Centre, benefiting from all local shops and amenities. There is also a good selection of schools nearby. The Readings is only a short drive to M11 Junction 7.





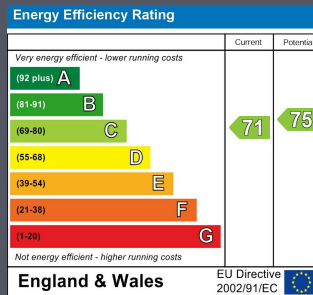
clarknewman

Approximate total area<sup>1)</sup>  
460.26 ft<sup>2</sup>  
42.76 m<sup>2</sup>

(1) Excluding balconies and terraces

While every attempt has been made to ensure accuracy, all measurements are approximate, not to scale. This floor plan is for illustrative purposes only.

GIRAFFE360



Equity House  
4-6 Market Street  
Harlow  
Essex  
CM17 0AH  
01279 400444  
hello@clarknewman.co.uk  
www.clarknewman.co.uk